

LARUE COUNTY 4-H

 Cooperative
Extension Service

NEWSLETTER  DECEMBER 2025

YOU'RE INVITED

4-H Awards Reception

HOSTED BY LARUE COUNTY 4-H COUNCIL

DECEMBER

SUNDAY

7

AT 2:00 PM

2025

JOIN US FOR AN AFTERNOON RECEPTION AND AWARDS
PRESENTATION TO RECOGNIZE 2025 4-H AWARDS POINTS
AND RECORD BOOK WINNERS AND VOLUNTEERS

REFRESHMENTS WILL BE PROVIDED
RSVP 270-358-3401 OR BY EMAIL TO
MWILMOTH@UKY.EDU

LARUE COUNTY EXTENSION SERVICE
807 OLD ELIZABETHTOWN RD
HODGENVILLE, KY 42748

12/13/25
LaRue County 4-H

YOUR CLUE

Where the spotlight
hits the stage,
and talent shines at
every age.

We'll bring our finest
4-H holiday fun
designed to spread joy
to everyone!



Beyond Ready



Sincerely,

Misty Wilmoth

Misty Wilmoth

LaRue County Extension Agent

For 4-H Youth Development

mwilmoth@uky.edu



MARTIN-GATTON COLLEGE OF AGRICULTURE, FOOD AND ENVIRONMENT

Educational programs of Kentucky Cooperative Extension serve all people regardless of economic or social status and will not discriminate on the basis of race, color, ethnic origin, national origin, creed, religion, political belief, sex, sexual orientation, gender identity, gender expression, pregnancy, marital status, genetic information, age, veteran status, physical or mental disability or reprisal or retaliation for prior civil rights activity. Reasonable accommodation of disability may be available with prior notice. Program information may be made available in languages other than English. University of Kentucky, Kentucky State University, U.S. Department of Agriculture, and Kentucky Counties, Cooperating.

Lexington, KY 40506




Disabilities
accommodated
with prior notification.

**Cooperative
Extension Service**

Agriculture and Natural Resources
Family and Consumer Sciences
4-H Youth Development
Community and Economic Development

DECEMBER

Sunday	Monday	Tuesday	Wednesday	Thursday	Friday	Saturday
	1 4-H COUNCIL MEETING 5 PM LC EXTENSION SERVICE	2 HOLIDAY CRAFTS WORKSHOP 4-6 PM LC EXTENSION SERVICE	3 COOKING CLUB 4-5:30 PM LC EXTENSION SERVICE	4 SHOOTING SPORTS NOT MEETING	5 PIGGY BANK & COUNTRY HAM PROJECT DEADLINE (UNLESS YOU ARE ATTENDING THE AWARDS RECEPTION)	6
7 4-H AWARDS RECEPTION 2 PM *RSVP ASAP*	8 WRANGLERS HORSE & LIVESTOCK CLUB MEETING 6 PM LC EXTENSION SERVICE	9 GARDENING CLUB 5 PM LC EXTENSION SERVICE	10	11	12 BOARD GAMES & BOLD FLAVORS REGISTRATION DEADLINE	13 4-H POP UP 10 AM - NOON ***LOOK FOR THE CLUE IN THE NEWSLETTER***
14	15	16 BOARD GAMES & BOLD FLAVORS 4-6 PM LC EXTENSION SERVICE *REGISTER BY 12/12*		18 CLOVERBUDS 5:15 PM LC EXTENSION SERVICE SHOOTING SPORTS NOT MEETING	19 CANDY SALES DEADLINE *PLEASE HAVE ALL MONEY TURNED INTO THE EXTENSION OFFICE BY 4:30 PM*	20
21	22	23	24	25 	26	27
28	29	30	31			
NOTE: EXTENSION OFFICE WILL BE CLOSED FROM DEC 24TH - JAN 5TH						

CLUB OFFICERS

LIVESTOCK CLUB



President: Hunter Locke
Vice President: Rylan Hines
Secretary: Braxton Brooks
Treasurer: Morgan Redner
Activities Leader: Emerson
Stickley (not pictured)

WRANGLERS HORSE CLUB



President: Patrick Janes
Vice President: Oakleigh Wells
Secretary: Olivia Leasor
Treasurer: Morgan Redner
Activities Leader: Emersyn Stickley

TEEN CLUB



President: Avery Bivens
Vice President: Hannah Falk
Secretary: Eva Falk

COOKING CLUB



President: William Shaw
Vice President: Anna Keplinger
Secretary: Kinsly Detre
Reporter: Scarlett Shaw

LCMS BEFORE SCHOOL CLUB



President: Annie Allen
Vice President: Haven Clark
Secretary: Everly Hall
Reporter: Cameron Merriman

4-H COOKING CLUB REPORT



Submitted by: Scarlett Shaw
4-H Cooking Club Reporter
October 15, 2025



The 4-H cooking club met on October 1, 2025. First, we ate some delicious pumpkin goods that included pumpkin pasta, pumpkin cookies, and more. Second, we started making pumpkin muffins. We used a mix from IGA, the steps were first to spray the pans with cooking spray, mix it all up and put it in the pans and then the oven. While we were waiting for it to bake, we selected officers. The following are the 2025-26 4-H Cooking Club officers: President William Shaw, Vice-President Anna Keplinger, Secretary Kinsly Detre, and Reporter Scarlett Shaw. Before finishing the meeting, we ate our pumpkin muffins, then talked a little and then sadly had to leave. None of this would happen if it was not for our amazing leaders, Vonda Gray and Beverly Heath!

KENTUCKY SAVES 2026 PIGGY BANK DESIGN CONTEST

What: The 2026 Piggy Bank Design Contest is a creative way for youth to learn the importance of saving money and reducing debt.

Why: To creatively celebrate Kentucky Saves Week.

Who: School students attending public, private, or home school located within the Commonwealth of Kentucky enrolled in Kindergarten through 12th grade.

When: Contest begins on **10/01/2025** and ends on **12/05/2025**.

How: Participants submit an original piggy bank and entry form to the LaRue County Extension Service.

Recognition: Winner will have their names, grade, counties and winning piggy banks shared via social media. Winners also will receive a certificate.

Entry Requirements: Entries must meet the following requirements to be eligible for judging

- The bank cannot exceed 12 inches X 12 inches X 12 inches (1 square foot).
- Piggy banks must be able to hold coins (i.e., include a slot that has been cut to insert coins).
- Piggy banks must be created or decorated by the youth contestant.
- Plastic or ceramic banks piggy banks may be used, but must be personally decorated.
- Piggy banks DO NOT have to be in the shape of a pig.
- You MAY use or repurpose other containers.



2025 Piggy Bank Design
Contest Winner Hunter Locke



Kentucky Saves Week:
April 6-10, 2026

Kentucky Saves:
[KentuckySaves.org](https://kysaves.org)

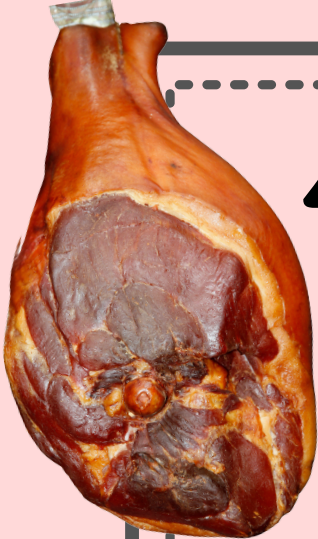
MoneyWi\$e:
<https://fcs.mgcafe.uky.edu/moneywise>

Forms can be found online at:

<https://larue.mgcafe.uky.edu/events/2026-piggy-bank-design-contest>

 Cooperative
Extension Service

MONEYWISE
VALUING PEOPLE. VALUING MONEY.



4-H Country Ham Project

Open to 4-H ages 9-18,
Cloverbuds and Adults

**All country ham participants must be enrolled in
4-H online for 2025-2026**



**Ham Project Registration Contracts are
available from the Extension Office and online at
[https://larue.mgcafe.uky.edu/events/2026-
country-ham-project](https://larue.mgcafe.uky.edu/events/2026-country-ham-project)**

Cost:

Cloverbuds & Adults: \$55 per ham

Regular 4-H Members: \$55 per person
(2 hams)

*(reduction in registration fee made possible by
the LaRue County Farm Bureau Federation)*

Important Dates:

Registration Deadline: December 5th, 2025
(or by December 7th if attending the 4-H Awards Reception)

Curing Date: Tentatively set for January 19th, 2026

April 2026: County 4-H Speech Contest

Ham participants are required to present their ham speech at the county level.

August 20th, 2026 : Ham speeches presented at State Fair

National Poultry & Egg Conference



KY 4-H Poultry Judging Team competed at Nationals on November 20th. The team consisted of Dylan Klett, Christopher Sweets, Taryn Turner from Warren County and Adam Reding from LaRue County.



4:00 PM - 6:00 PM

Register by 12/12/2025

Call 270-358-3401



University of Kentucky
Cooperative
Extension Service





Bracelet Making

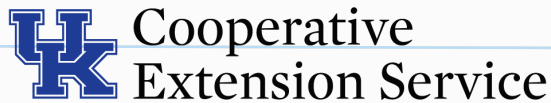


Written Communications

The 4-H Written Communications Contest is a competition for youth ages 9-18 who have a passion for writing.

Categories include:

- Songwriting
- Poetry
- Original Monologue
- Press Release
- Public Service Announcement
- “What 4-H Means to Me” Essay
- Infographic
- New!** • Flyer
- New!** • Podcast (**Senior level only, Team Event - NO Individual Entries**)



CONTACT 4-H AGENT, MISTY WILMOTH FOR MORE INFORMATION

RULES AND INFORMATION:

- JUNIOR CLASS: OPEN TO ANY 4-H MEMBER AGE 9-13 (AGE AS OF 1/1/26)
- SENIOR CLASS: OPEN TO ANY 4-H MEMBER AGE 14-18 (AGE AS OF 1/1/26)
- YOUTH MAY ENTER ONE OR MORE CATEGORIES.
- EACH WRITING PIECE MUST BE ORIGINAL. IF THERE IS ANY QUESTION, THE PARTICIPANT WILL BE DISQUALIFIED.
- ENTRIES MAY BE SCANNED AND EMAILED TO MWILMOTH@UKY.EDU OR DELIVER HARD COPY TO THE EXTENSION OFFICE.
- ALL ENTRIES ARE TO BE ON 8.5 X 11 PAPER, WITH ENTRANT'S CATEGORY, NAME, AGE AND COUNTY ON A COVER PAGE AND LAST NAME ON EVERY PAGE.
- ENTRIES ARE TO BE DOUBLE-SPACED, TYPED WITH SIZE 12 FONT, WHITE PAPER. SONGS MAY BE SINGLE SPACED WITHIN VERSES, CHORUS AND BRIDGE AND DOUBLE SPACED BETWEEN EACH ITEM.
- SONG WRITING, POETRY, PRESS RELEASE AND PUBLIC SERVICE ANNOUNCEMENT LESSONS CAN BE FOUND IN NATIONAL 4-H CURRICULUM 'PICKING UP THE PIECES' AND 'PUTTING IT TOGETHER.'
- MONOLOGUE LESSON CAN BE FOUND IN NATIONAL 4-H CURRICULUM 'PLAY THE ROLE.' ALL ARE AVAILABLE FROM THE EXTENSION OFFICE.

County Deadline is March 6th, 2026!