


* Due September 30, 2026



University of Kentucky
College of Agriculture,
Food and Environment
Cooperative Extension Service
 4-H Youth Development



LaRue County 4-H

4-H Cloverbuds Record Form



4-H Cloverbud



My Name is _____

T-shirt size: _____

Date Submitted: _____

* Submit to the Extension Office by September 30 in order to be eligible for recognition at the annual 4-H Awards Reception

* Cloverbuds are ages 5 to 8 as of January 1 during the 4-H Program Year or in Kindergarten through 3rd grade.

**Cooperative
Extension Service**

Agriculture and Natural Resources
Family and Consumer Sciences
4-H Youth Development
Community and Economic Development

MARTIN-GATTON COLLEGE OF AGRICULTURE, FOOD AND ENVIRONMENT

Educational programs of Kentucky Cooperative Extension serve all people regardless of economic or social status and will not discriminate on the basis of race, color, ethnic origin, national origin, creed, religion, political belief, sex, sexual orientation, gender identity, gender expression, pregnancy, marital status, genetic information, age, veteran status, physical or mental disability or reprisal or retaliation for prior civil rights activity. Reasonable accommodation of disability may be available with prior notice. Program information may be made available in languages other than English. University of Kentucky, Kentucky State University, U.S. Department of Agriculture, and Kentucky Counties, Cooperating. Lexington, KY 40506



Disabilities
accommodated
with prior notification.

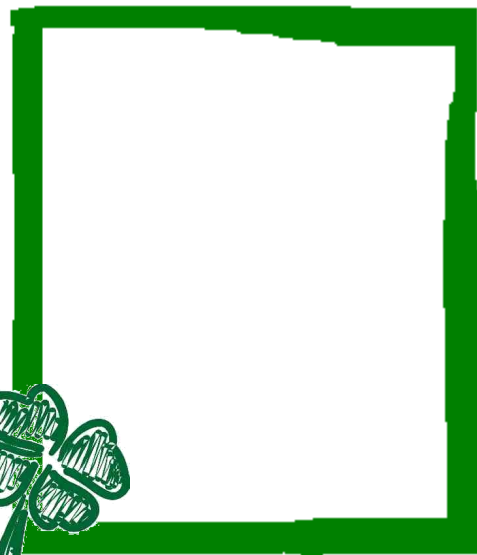
All About Me!

Birthdate _____

Age _____

Grade _____

Attach a picture of you or draw
a self portrait in the frame.



Check each club you participated
in from September 1, 2025 to
August 31, 2026.

- ☐ Cooking
- ☐ Livestock
- ☐ Horse
- ☐ Dog
- ☐ Art Classes
- ☐ Gardening



List other 4-H activities you
participated in from September 1, 2025
to August 31, 2026.

Did you participate in the Cloverbud Day Camp?

Yes
☐

No
☐

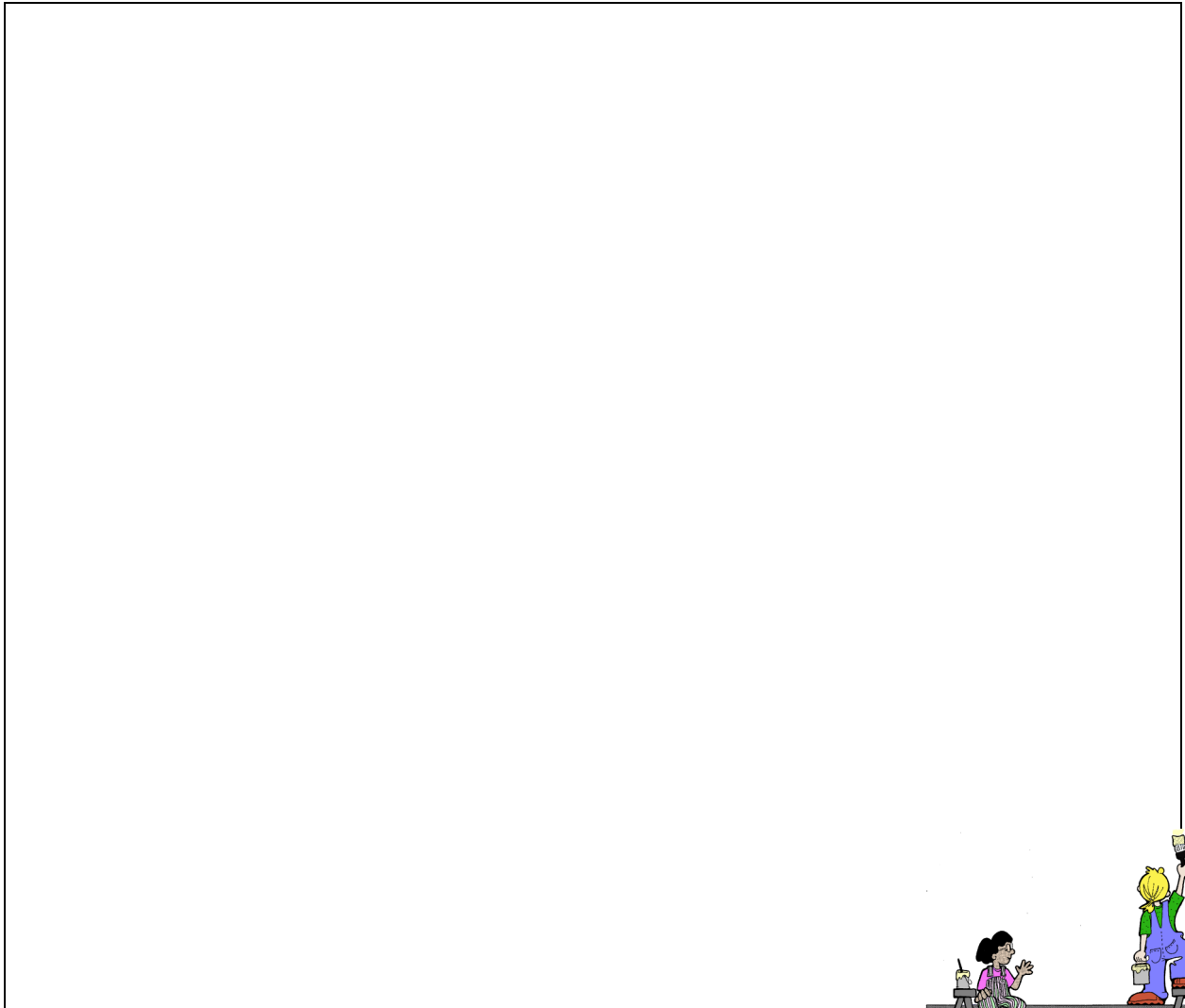
Did you participate in the Cloverbud overnight Camp?

Yes
☐

No
☐



Draw a picture of the favorite 4-H activity, project or event you participated in over the past 4-H program year.



Describe the picture and why you chose this project or activity. What did you like about it?



Draw and color a picture in each leaf to show what the four "H"s in 4-H stand for. Write the words on the blanks provided for each one.

